

***DUNLOP***  
**SS25 FOOTWEAR COLLECTION**



OFFICIAL  
PARTNER

**KONDOR Sp. z o.o.** 91A Św. Teresy Street 91-341 Łódź / POLAND/ tel. (+48) 42 27 21 000 / [inquiry@kondor.com.pl](mailto:inquiry@kondor.com.pl) / [www.kondor.com.pl](http://www.kondor.com.pl)

## WELCOME TO THE WORLD OF DUNLOP FOOTWEAR!

In every step you take, in every goal you reach, DUNLOP shoes accompany you. Designed with the highest technology and quality materials, our sports shoes combine style, comfort, and performance.

Whether you are running, training in the gym, or simply enjoying a walk outdoors, DUNLOP shoes are made to enhance your performance and take care of your feet. Discover a new way to live the passion for sports with DUNLOP footwear.

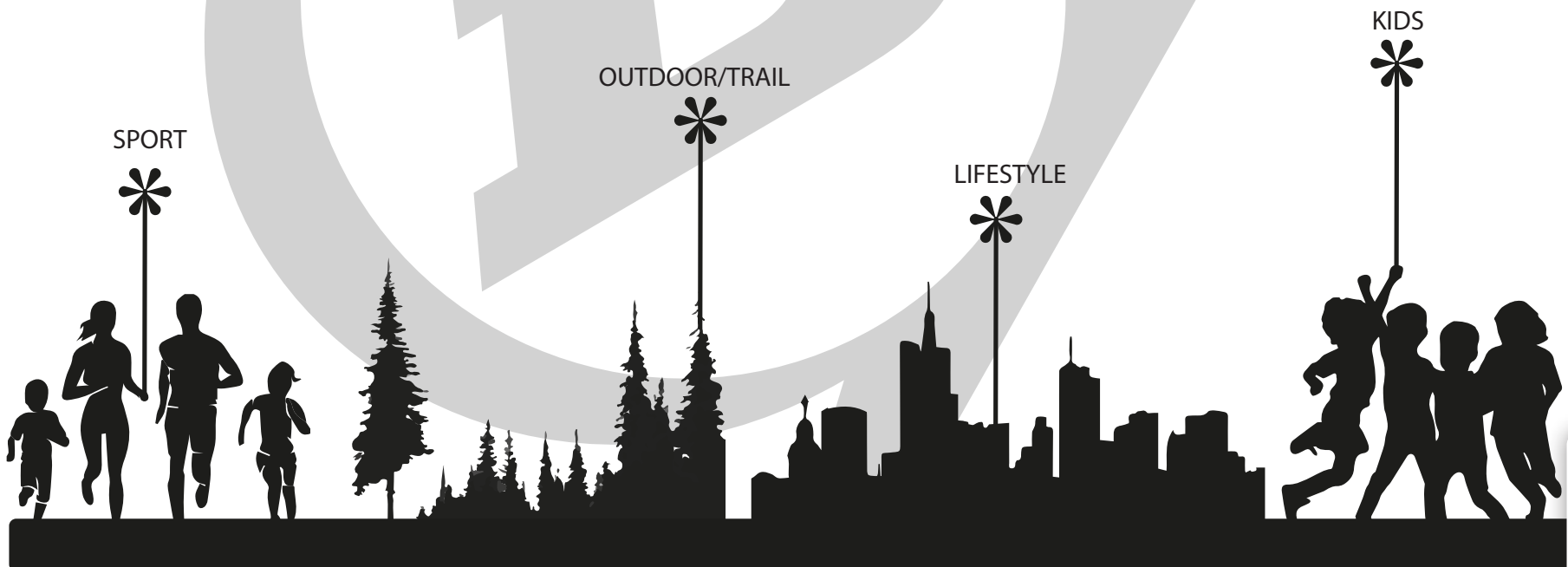
Join the experience and elevate your game with DUNLOP!

SPORT

OUTDOOR/TRAIL

LIFESTYLE

KIDS



COLLECTION  
SPRING-SUMMER 25



**K**  
OFFICIAL  
PARTNER



sport

#3

COLLECTION  
SPRING-SUMMER 25

men size 40-46

women size 36-39



# FIT-10



SLO2.003L  
COLOR: BLUE-ALLURE-TANGERINE



SPORT



SLO2.003L  
W1 SURF SPRAY-EVENING HAZE-C. GREY



SLO2.003L  
-W1 BLACK-FUCHSIA PURPLE-PINK



SLO2.003L  
BLACK-LIME GREEN-COOL GREY



SLO2.003L  
COLOR: BLUE-ALLURE-TANGERINE



COLLECTION  
SPRING-SUMMER 25

men size 40-46

women size 36-39



# SPEED



SPEED  
COLOR: M1- LIME-BLACK-GREY



SPORT



SPEED  
W1- LT GREY- DUST PINK- MINT



SPEED  
W1 CREAM- MINT- LIGHT GREY



SPEED  
M1- GREY- BLACK- COBALT



SPEED  
M1- LIME- BLACK- GREY



COLLECTION  
SPRING-SUMMER 25

men size 40-46

women size 36-39



SL07.002L  
COLOR: M1- BLACK-IMPERIAL BLUE-CITRONELLE



# NITRO



SPORT



SL07.002L  
W1- WHITE-BLACK-BLUE-PHLOX PINK



SL07.002L  
W1 sky blue-COUNTRY BLUE-  
SHADOW LIME



SL07.002L  
m1- WHITE-PATRIOT BLUE-red.



SL07.002L  
m1- BLACK-IMPERIAL BLUE-CITRONELLE



COLLECTION  
SPRING-SUMMER 25

women size 36-39



SL02.004L  
COLOR: SODALITE BLUE-ALLURE-TANGERINE TANGO



# MARATHON



SL02.004L  
BLACK-MYSTICAL-AOLD LIME-FUCHSIA



SL02.004L  
MYSTICAL-THISTLE-BURNT CORAL



SPORT

COLLECTION  
SPRING-SUMMER 25

men size 40-46

women size 36-39



# WIND



WIND  
COLOR: M 1- BLACK-COBALT-GREY



WIND  
W1- WHITE-CHORAL-LIGHT GREY



WIND  
W1- EGGPLANT-BEIGE-GREY



WIND  
M 1- WHITE-BLACK- LIME



WIND  
M 1- BLACK-COBALT GREY





COLLECTION  
SPRING-SUMMER 25



trail-outdoor



COLLECTION  
SPRING-SUMMER 25

men size 40-46

women size 36-39

# ELITE



SL07.004L  
COLOR: M1- BLUE - LIME - WHITE



TRAIL



SL07.004L  
W1-WASABI- BLUE QUARTZ-COOL GRAY



SL07.004L  
W1 OYSTER - GRAY-NARCISSUS



SL07.004L  
M1- TAUPE-BLACK-COOL GREY



SL07.004L  
M1- BLUE - LIME - WHITE



COLLECTION  
SPRING-SUMMER 25

men size 40-46

women size 36-39

# NEW TRAIL



TRAIL

NEW TRAIL  
COLOR: WI-GREY-BLUE-FUCHSIA



NEWTRAIL  
M1- BLACK-COBALT-LIME



NEW TRAIL  
M1 GREY-BLACK-ORANGE



NEWTRAIL  
W1- MINT-DRESS BLUE-LT GREY



NEW TRAIL  
WI- GREY- BLUE- FUCHSIA



COLLECTION  
SPRING-SUMMER 25

men size 40-46

women size 36-39

# LEOPARD



SL01.001L-  
COLOR: SODALITE BLUE-ALLURE-TANGERINE TANGO



TRAIL



SL01.001L  
M1 BLACK -RED-COOL GREY



SL01.001L  
M1 FOREST- BLACK-CREAM



SL01.001L  
W1 CAMEO ROSE-WHITE



SL01.001L  
W1 SKYWAY-CORONET BLUE-LEMON



COLLECTION  
SPRING-SUMMER 25

men size 40-46

women size 36-39

# WHEELS



SL07.001L  
COLOR: w1 - grey-BLACK-RUST



TRAIL



SL07.001L  
M1 BLACK-GRAPE - GREEN- GRAY



SL07.001L  
M1 BIG DIPPER -BLACK-RUST.



SL07.001L  
W1 DUSTY PINK-BLACK-COOL GRAY



SL07.001L  
W1 -GREY-BLACK RUST



COLLECTION  
SPRING-SUMMER 25

men size 40-46

women size 36-39

# EXPLORER



SL07.003L  
COLOR: BLUE-BLACK-CITRONELLE



TRAIL



SL07.003L  
THISTLE-MYSTICAL-CORAL-ORCHID



SL07.003L  
CANYON CTAY-VIVID VIOLA-BLUE.



SL07.003L  
SHADE-BLACK-TANGERINE-GREY



SL07.003L  
BLUE-BLACK-CITRONELLE



COLLECTION  
SPRING-SUMMER 25

men size 40-46

women size 36-39



# CLIMBER



TRAIL

CLIMBER  
COLOR: SAND- LILAC- MAKE UP



CLIMBER  
BLACK- CHARCOAL - BLUE



CLIMBER  
TANG N BRONW- BURN ORANGE.



CLIMBER  
GREY - ICE- DUSTY PINK



CLIMBER  
SAND - LILAC- MAKE UP



COLLECTION  
SPRING-SUMMER 25

men size 40-46

women size 36-39

# DUST



DUST  
COLOR: SAND- BLACK- BURN ORANGE



TRAIL



DUST  
BLACK - CHARCOAL- PINK



DUST  
NAVY BLUE- BLUE- LT GREY- PINK



DUST  
GREY - BLACK-NAVY BLUE



DUST  
SAND - BLACK- BURN ORANGE





COLLECTION  
SPRING-SUMMER 25

men size 40-46

women size 36-39

# SPEEDTRACK



SL04.001L-  
COLOR: W1 BEIGE-WARM TAUPE-ROSE-L.GREEN.



TRAIL



SL04.001L-  
BLACK-HIGH RISE-TANGERINE



SL04.001L-  
NAVY-R BLUE-GREEN-LT BEIGE



SL04.001L-  
W1 THISTLE-SKIPPER BLUE-POOL BLUE



SL04.001L-  
W1 BEIGE-WARM TAUPE-ROSE-L.GREEN.



COLLECTION  
SPRING-SUMMER 25



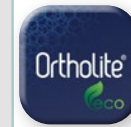
lifestyle

COLLECTION  
SPRING-SUMMER 25

men size 40-46

women size 36-39

# COURT



COW SUEDE \*



SL02.006L  
COLOR: W1 WHITE-DUSTY AQUA



XC51.006L  
WHITE-dress blue-red



XC51.006L  
white- grass



SL02.006L  
W1 WHITE-ORCHID HUSH



SL02.006L  
W1 WHITE-DUSTY AQUA



LIFESTYLE

COLLECTION  
SPRING-SUMMER 25

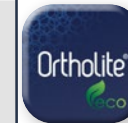
men size 40-46

women size 36-39

COW SUEDE



# OCEAN



SLO2.009L  
COLOR: WHITE-NORTHERN -DRESS BLUE-LAUREL



SLO2.009L  
BEIGE -LT GREY- CHORAL



SLO2.009L  
WHITE- LT GREY- MINT-PINK



SLO2.009L  
WHITE-BLACK-WEATHERVANE



SLO2.009L  
WHITE-NORTHERN -DRESS BLUE-LAUREL



COLLECTION  
SPRING-SUMMER 25

men size 40-46

women size 36-39

# JUST



\* COW SUEDE

DUST  
COLOR: SAND- BLACK- BURN ORANGE



LIFESTYLE



DUST  
BLACK - CHARCOAL- PINK



DUST  
NAVY BLUE- BLUE- LT GREY- PINK



DUST  
GREY - BLACK-NAVY BLUE



DUST  
SAND - BLACK- BURN ORANGE



COLLECTION  
SPRING-SUMMER 25

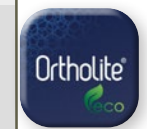
men size 40-46

# HYBRID



COW SUEDE \*

\* COW SUEDE



LIFESTYLE

XC51.007L  
COLOR: GREEN- LT BEIGE- WHITE



XC51.007L  
WHITE -DRESS BLUE- LT GREY- RED.



XC51.007L  
GREEN- LT BEIGE- WHITE



COLLECTION  
SPRING-SUMMER 25

men size 40-46

women size 36-39

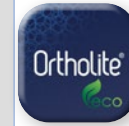
COW SUEDE \*



SL01.006L  
COLOR: WHITE-BURNT CORAL



# CHOLET



LIFESTYLE



SL01.006L  
WHITE-BLACK



SL01.006L  
DRESS BLUES-WHITE



SL01.006L  
GREY - BLACK-NAVY BLUE



SL01.006L  
WHITE-BURNT CORAL



COLLECTION  
SPRING-SUMMER 25

KIDS

KIDS



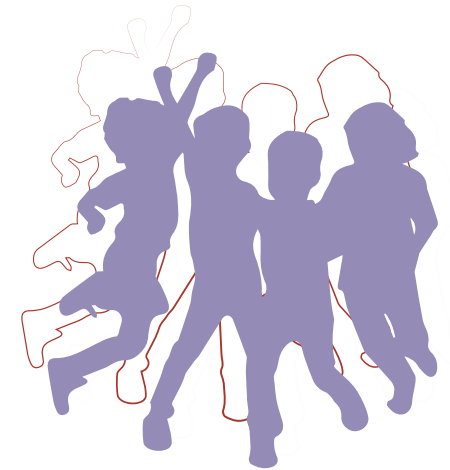


COLLECTION  
SPRING-SUMMER 25

kids size 30 - 35



# STREET



SL01.008V  
COLOR: WHITE- LILAC- FUCHSIA



SL01.008V  
WHITE- BLACK- LIME



SL01.008V  
BLACK- COBALT- ORANGE



SL01.008V  
WHITE- NAVY- MINT- PINK



SL01.008V  
WHITE- LILAC- FUCHSIA



COLLECTION  
SPRING-SUMMER 25

kids size 30 - 35

# SKATE-H



SL01.007V  
COLOR: BLACK-PINK



SL01.007V  
NAVY-ORANGE



SL01.007V  
WHITE-NAVY-RED



SL01.007V  
WHITE-ORANGE-BLUE



SL01.007V  
BLACK-FUCHSIA

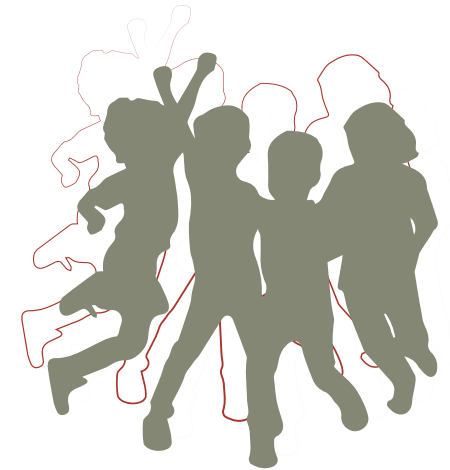


COLLECTION  
SPRING-SUMMER 25

kids size 30 - 35



# SPEED



SL06.002V  
COLOR: khaki - black- orange



SL06.003V  
LILAC-LT GREY



SL06.003V  
FUCHSIA- BLACK- LIME-



SL06.003V  
BLUE- BLACK- LIME



SL06.003V  
KHAKI- BLACK- ORANGE



COLLECTION  
SPRING-SUMMER 25

kids size 30 - 35



# GROOVE



SLO4.002L  
COLOR: blue- navy - orange



SLO4.002L  
LT BLUE- APPLE GREEN- NAVY



SLO4.002L  
LILAC- MINT- GREY



SLO4.002L  
BLACK- RED- WHITE



SLO4.002L  
WHITE- NAVY- BLUE



COLLECTION  
SPRING-SUMMER 25

KIDS SIZE 30 - 35

# MOUNTAIN JR



SP51.003L  
COLOR: GREY- MINT- CHORAL



SP51.003L  
GREY- LIME- BLACK- BLUE



SP51.003L  
GREY- CHORAL



SP51.003L  
BLUE- FUCHSIA- GREY



SP51.003L  
GREY- MINT- CHORAL



COLLECTION  
SPRING-SUMMER 25

KIDS SIZE 30 - 35

# CHOLET-K

COW SUEDE



SLO1.006L  
COLOR: WHITE- COBALT



KIDS



SLO1.006L  
WHITE- LILAC



SLO1.006L  
WHITE- RED



SLO1.006L  
WHITE- BLACK- RED



SLO1.006L  
WHITE- COBALT

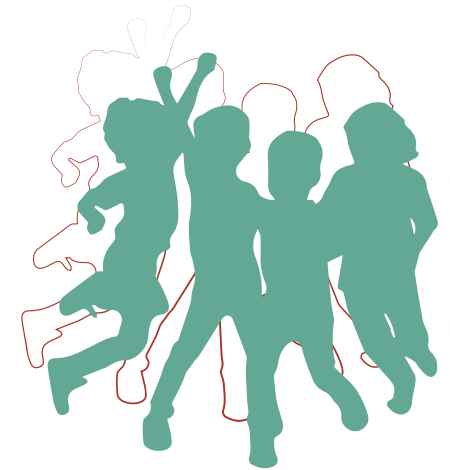


COLLECTION  
SPRING-SUMMER 25

KIDS SIZE 30 - 35



# MARBLE



SL02.005V  
COLOR: GREEN- BLACK- YELLOW



SL02.010V-01  
PINK - LT GREY- PURPLE



SL02.005V  
LT GREY- PINK- MINT



SL02.005V  
BLACK- IMPERIAL BLUE- TANGERINE



SL02.010V-01  
GREEN- BLACK- YELLOW



KIDS

COLLECTION  
SPRING-SUMMER 25

KIDS SIZE 30 - 35



# CLIMB



SLO2.010V-01  
COLOR: COBALT - BLACK - YELLOW



KIDS



SLO2.010V-01  
PINK - LT GREY-



SLO2.010V-01  
LT GREY- PINK- MINT



SLO2.010V-01  
RED - BLACK- LIME



SLO2.010V-01  
COBALT-BLACK-YELLOW



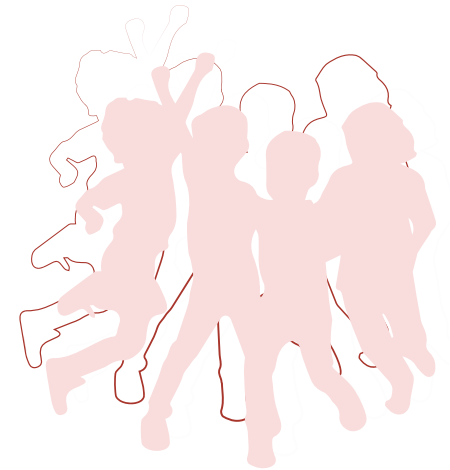


COLLECTION  
SPRING-SUMMER 25

KIDS SIZE 30 - 35



# TUBE



SL02.008V  
COLOR: MINT- PINK- FUCHSIA



KIDS



SL02.008V  
RED- BLACK- WHITE



SL02.008V  
BLUE- BLACK- LIME



SL02.008V  
LILAC- DK. LILAC- PINK



SL02.008V  
MINT- PINK- FUCHSIA



COLLECTION  
SPRING-SUMMER 25

KIDS SIZE 30 - 35



SP51.004V  
COLOR: BLACK- RED- LT GREY



# GHOST



KIDS



SP51.004V  
LT GREY- BLACK- FUCHSIA



SP51.004V  
BLUE- NAVY- CHORAL



SP51.004V  
BLUE- ORANGE- LT GREY



SP51.004V  
BLACK- RED- GREY



COLLECTION  
SPRING-SUMMER 25

KIDS SIZE 30 - 35

# SPOT



SL06.002V  
COLOR: LT GREY- PINK



Kids



SL06.002V  
GREY- BLUE- RED



SL06.002V  
NAVY- LIME- BLUE



SL06.002V  
GREY- AQUA- CHORAL



SL06.002V  
LT GREY- PINK



COLLECTION  
SPRING-SUMMER 25



# PATH



SL17.001N  
COLOR: BLUE - BLACK - LIME



SL17.001N  
ORANGE - GREY - BLACK - WHITE



SL17.001N  
BLACK - RED - LIME



SL17.001N  
BLUE - BLACK - LIME



kids





***DUNLOP***

official distributor:

**KONDOR Sp. z o.o.** 91A Św. Teresy Street  
91-341 Łódź / POLAND/ tel. (+48) 42 27 21 000

**[inquiry@kondor.com.pl](mailto:inquiry@kondor.com.pl)**

**[www.kondor.com.pl](http://www.kondor.com.pl)**