

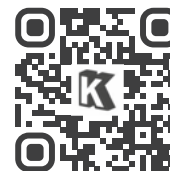
**kondor.com.pl**  
lifestyle footwear catalogue

**SPRING / SUMMER / 2025**

KONDOR Sp. z o.o. / 91a Św. Teresy Street  
91-341 Łódź / POLAND  
tel. (+48) 42 27 21 000 / inquiry@kondor.com.pl

featuring footwear with:





pages#4-20 kids' collection

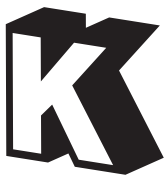
pages#21-47 women's collection

pages#48-52 men's collection

pages#53-84 solid colours collection

# table of contents





# kids' collection

pages #5-20

**kondor.com.pl**

lifestyle footwear catalogue

**SPRING / SUMMER / 2025**

KONDOR Sp. z o.o. / 91a Św. Teresy Street

91-341 Łódź / POLAND

tel. (+48) 42 27 21 000 / inquiry@kondor.com.pl

featuring footwear with:





**KIDS' > WATER SHOES**



**MODEL# Surs25-FANCY-ANIMALS**



**MODEL# Surs25-FARM**



**MODEL# Surs25-TIGER**



**MODEL# Surs25-UNICORN**

> TPR OUTSOLE  
NON-SLIP  
> SUBLIMATION PRINT  
> ADJUSTABLE CORD  
ON BACK FOR A  
BETTER FASTENING



**SIZE RANGE: 25-30**

**KIDS' > WATER SHOES**



**MODEL#** SURS25-FOOTBALL



**MODEL#** SURS25-RACE-CAR



**MODEL#** SURS25-SHIP

KIDS' > FLIP FLOPS



MODEL# JAPS25-FANCY-ANIMALS



MODEL# JAPS25-FARM



MODEL# JAPS25-TIGER



- > PVC STRAP
- > PE OUTSOLE
- > HIGH QUALITY TRANSFER PRINT



pvc



pe

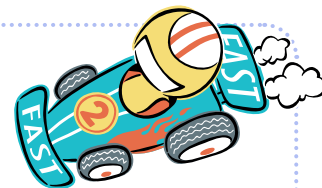


pvc



MODEL# JAPS25-UNICORN

SIZE RANGE: 28-35



MODEL# JAPS25-FOOTBALL



MODEL# JAPS25-RACE-CAR



MODEL# JAPS25-SHIP





KIDS' > POOL SLIPPERS



MODEL# KLAS25-FANCY-ANIMALS



MODEL# KLAS25-FARM



MODEL# KLAS25-TIGER



- > COMFY EVA OUTSOLE
- > 3D UPPER LOOK
- > SUPER COOL LOOK



rubber



eva



eva



MODEL# KLAS25-UNICORN

SIZE RANGE: 28-35

**KIDS' > POOL SLIPPERS**



**MODEL# KLAS25-FOOTBALL**



**MODEL# KLAS25-RACE-CAR**



**MODEL# KLAS25-SHIP**

**KIDS' > SANDALS**



**SIZE RANGE:** 24-29

> COMFY EVA OUTSOLE  
> COLOURFUL PRINT  
> PERFECT FOR SUMMER



**MODEL#** SNRS25-FANCY-ANIMALS



**MODEL#** SNRS25-FARM



**MODEL#** SNRS25-TIGER



**MODEL#** SNRS25-UNICORN



MODEL# SNRS25-FOOTBALL



MODEL# SNRS25-RACE-CAR



MODEL# SNRS25-SHIP





**KIDS' > SANDALS**



**SIZE RANGE:** 22-29; 30-35

> COMFY EVA OUTSOLE  
> COLOURFUL PRINT  
> PERFECT FOR SUMMER

**MODEL#** BKRS25-FANCY-ANIMALS



**MODEL#** BKRS25-FARM



**MODEL#** BKRS25-TIGER



**MODEL#** BKRS25-UNICORN



**MODEL#** BKRS25-FOOTBALL



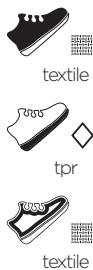
**MODEL#** BKRS25-RACE-CAR



**MODEL#** BKRS25-SHIP



**KIDS' > TRAINERS**



**SIZE RANGE:** 22-29; 30-35

- > COMFY EVA OUTSOLE
- > COLOURFUL PRINT
- > COTTON UPPER

**MODEL#** ZSS25-FANCY-ANIMALS



**MODEL#** ZSS25-FARM



**MODEL#** ZSS25-TIGER



**MODEL#** ZSS25-UNICORN

**KIDS' > TRAINERS**



**MODEL# ZSS25-FOOTBALL**



**MODEL# ZSS25-RACE-CAR**



**MODEL# ZSS25-SHIP**





KIDS' > SLIPPERS



MODEL# DDS25-FANCY-ANIMALS



MODEL# DDS25-FARM



MODEL# DDS25-FARM

> COMFY FIT  
> SOFT AND COZY  
> CLASSIC LOOK



textile



tpr



textile



MODEL# DDS25-FARM

SIZE RANGE: 18-35



MODEL# DDS25-FOOTBALL



MODEL# DDS25-RACE-CAR



MODEL# DDS25-SHIP

**KIDS' > RAIN BOOTS**



**MODEL#** URBS25-FARM



**MODEL#** URBS25-FANCY-ANIMALS



**MODEL#** URBS25-RACE-CAR

> PUDDLE PROOF &  
ADVENTURE READY  
> KID-FRIENDLY DESIGNS



**SIZE RANGE:** 26-32

**KIDS' > RAIN BOOTS**

> LENTICULAR  
PRINT  
STICKER CHANGING  
WITH THE VIEW ANGLE



**MODEL# URBS25-TIGER**



**MODEL# URBS25-UNICORN**

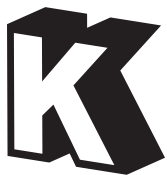


**MODEL# URBS25-FOOTBALL**



**MODEL# URBS25-SHIP**





# women's collection

pages#22-47 →

**kondor.com.pl**

lifestyle footwear catalogue

**SPRING / SUMMER / 2025**

KONDOR Sp. z o.o. / 91a Św. Teresy Street

91-341 Łódź / POLAND

tel. (+48) 42 27 21 000 / inquiry@kondor.com.pl

featuring footwear branded by:

**HSL**  
HIGH STREET LONDON



**WOMEN'S > FLIP FLOPS**



**MODEL#** SRIS25-CHECKER



pvc



eva



eva

**SIZE RANGE:** 36-41

> PVC STRAP  
> TWO COLOUR  
EVA OUTSOLE



**MODEL#** SRIS25-FRUITS



**MODEL#** SRIS25-GOLDEN-FLOWERS

**WOMEN'S > FLIP FLOPS**



**MODEL#** SRIS25-PASTEL-FLOWERS



**MODEL#** SRIS25-PINK-FLOWERS



**MODEL#** SRIS25-TIGRESS



**MODEL#** SRIS25-TROPICAL



**MODEL#** SRIS25-WHITE-FLOWERS



## WOMEN'S > FLIP FLOPS

- > BEACH READY
- > VIVID & COLORFUL DESIGNS
- > POOLSIDE PERFECT



**MODEL#** JAPS25-CHECKER



**MODEL#** JAPS25-FRUITS



**MODEL#** JAPS25-GOLDEN-FLOWERS



pvc



pe



pe

**SIZE RANGE:** 36-41



**WOMEN'S > FLIP FLOPS**



**MODEL#** JAPS25-PASTEL-FLOWERS



**MODEL#** JAPS25-PINK-FLOWERS



**MODEL#** JAPS25-TIGRESS



**MODEL#** JAPS25-TROPICAL



**MODEL#** JAPS25-WHITE-FLOWERS

## WOMEN'S > POOL SLIPPERS

- > COOL 3D UPPER EFFECT
- > CUTE & CASUAL LOOK



**MODEL#** KLAS25-CHECKER



**MODEL#** KLAS25-FRUITS



**MODEL#** KLAS25-GOLDEN-FLOWERS



rubber



eva

**SIZE RANGE:** 36-41

**WOMEN'S** > POOL SLIPPERS



**MODEL#** KLAS25-PASTEL-FLOWERS



**MODEL#** KLAS25-PINK-FLOWERS



**MODEL#** KLAS25-TIGRESS



**MODEL#** KLAS25-TROPICAL



**MODEL#** KLAS25-WHITE-FLOWERS

## WOMEN'S > SLIPPERS

- > EVA SOLE
- > HIGH QUALITY TRANSFER PRINT



**MODEL#** KRDS25-CHECKER



**MODEL#** KRDS25-FRUITS



**MODEL#** KRDS25-GOLDEN-FLOWERS



textile  
pvc



pvc

**SIZE RANGE:** 36-41



**WOMEN'S** > SLIPPERS



**MODEL#** KRDS25-PASTEL-FLOWERS



**MODEL#** KRDS25-PINK-FLOWERS



**MODEL#** KRDS25-TIGRESS



**MODEL#** KRDS25-TROPICAL



**MODEL#** KRDS25-WHITE-FLOWERS

## WOMEN'S > SLIPPERS

- > EMBOSSED LOGO
- > FOAM FILLED UPPER FOR TOP COMFORT
- > HIGH QUALITY PRINT



**MODEL#** EMB525-CHECKER



**MODEL#** EMB525-FRUITS



**MODEL#** EMB525-GOLDEN-FLOWERS



pu



eva



textile

**SIZE RANGE:** 36-41

**WOMEN'S > SLIPPERS**



**MODEL#** EMBS25-PASTEL-FLOWERS



**MODEL#** EMBS25-PINK-FLOWERS



**MODEL#** EMBS25-TIGRESS



**MODEL#** EMBS25-TROPICAL



**MODEL#** EMBS25-WHITE-FLOWERS

**WOMEN'S > SANDALS**



**SIZE RANGE:** 36-41

**MODEL#** PH3S25-CHECKER

> LEATHER INSOLE  
> STYLISH STRAPS  
> TRENDY LOOK



**MODEL#** PH3S25-FRUITS



**MODEL#** PH3S25-GOLDEN-FLOWERS



**WOMEN'S** > SANDALS



**MODEL#** PH3S25-PASTEL-FLOWERS



**MODEL#** PH3S25-PINK-FLOWERS



**MODEL#** PH3S25-TIGRESS



**MODEL#** PH3S25-TROPICAL



**MODEL#** PH3S25-WHITE-FLOWERS

**WOMEN'S > SANDALS**

> LEATHER INSOLE  
> CLASSIC & TIMELESS LOOK



**MODEL#** PHS25-CHECKER



**MODEL#** PHS25-FRUITS



pu



eva



leather  
suede



**MODEL#** PHS25-GOLDEN-FLOWERS



**MODEL#** PHS25-PASTEL-FLOWERS

**SIZE RANGE:** 36-41

**WOMEN'S** > SANDALS



**MODEL#** PHS25-PINK-FLOWERS



**MODEL#** PHS25-TIGRESS



**MODEL#** PHS25-TROPICAL



**MODEL#** PHS25-WHITE-FLOWERS

**WOMEN'S > CANVAS TRAINERS**

- > TRENDY LOW CUT BUILD WITH MASSIVE TOPECAP
- > PERFECT FOR EVERYDAY COMFORT



**MODEL#** TLS25-CHECKER



**MODEL#** TLS25-FRUITS



textile



pvc



textile



**SIZE RANGE:** 36-41

**MODEL#** TLS25-GOLDEN-FLOWERS



**MODEL#** TLS25-PASTEL-FLOWERS



**WOMEN'S** > CANVAS TRAINERS



**MODEL#** TLS25-PINK-FLOWERS



**MODEL#** TLS25-TIGRESS



**MODEL#** TLS25-TROPICAL



**MODEL#** TLS25-WHITE-FLOWERS

**WOMEN'S > CANVAS TRAINERS**

- > ELEVATED SOLE FOR STYLISH LIFT
- > SNUG & COMFY FIT
- > CANVAS UPPER



**MODEL# DL-JN-CHECKER**



**MODEL# DL-JN-FRUITS**



**MODEL# DL-JN-GOLDEN-FLOWERS**



**MODEL# DL-JN-PASTEL-FLOWERS**

**SIZE RANGE: 36-41**

**WOMEN'S** > CANVAS TRAINERS



**MODEL#** DL-JN-PINK-FLOWERS



**MODEL#** DL-JN-TIGRESS



**MODEL#** DL-JN-TROPICAL



**MODEL#** DL-JN-WHITE-FLOWERS

## WOMEN'S > SLIPPERS

- > ADJUSTABLE VELCRO STRAPS
- > CORDUROY FABRIC
- > SOFT COMFORT



**MODEL#** HAS25-CHECKER



**MODEL#** HAS25-FRUITS



**MODEL#** HAS25-GOLDEN-FLOWERS



**SIZE RANGE:** 36-41



**WOMEN'S > SLIPPERS**



**MODEL#** HAS25-PASTEL-FLOWERS



**MODEL#** HAS25-PINK-FLOWERS



**MODEL#** HAS25-TIGRESS



**MODEL#** HAS25-TROPICAL



**MODEL#** HAS25-WHITE-FLOWERS

**WOMEN'S > SLIPPERS**

- > COMFY FIT
- > SOFT AND COZY
- > CLASSIC LOOK



textile



tpr



textile

**SIZE RANGE:** 36-41



**MODEL#** DDS25-CHECKER



**MODEL#** DDS25-FRUITS



**MODEL#** DDS25-GOLDEN-FLOWERS

**WOMEN'S > SLIPPERS**



**MODEL#** DDS25-PASTEL-FLOWERS



**MODEL#** DDS25-PINK-FLOWERS



**MODEL#** DDS25-TIGRESS



**MODEL#** DDS25-TROPICAL



**MODEL#** DDS25-WHITE-FLOWERS

## WOMEN'S > RAIN BOOTS



- > RUBBER HIGH FLEX FOR TOP COMFORT
- > COOL CHELSEA BOOTS LOOK

MODEL# JRAINS25-CHECKER



MODEL# JRAINS25-FRUITS



rubber



rubber



textile



MODEL# JRAINS25-GOLDEN-FLOWERS



MODEL# JRAINS25-PASTEL-FLOWERS

SIZE RANGE: 36-41



**WOMEN'S** > RAIN BOOTS



**MODEL#** JRAINS25-PINK-FLOWERS



**MODEL#** JRAINS25-TIGRESS



**MODEL#** JRAINS25-TROPICAL



**MODEL#** JRAINS25-WHITE-FLOWERS

**WOMEN'S > BAGS**



**MODEL# BRBS25-CHECKER**



**MODEL# BRBS25-FRUITS**



**MODEL# BRBS25-GOLDEN-FLOWERS**



**MODEL# BRBS25-PASTEL-FLOWERS**

> COLOURFUL  
PATTERNS



**MODEL# BRBS25-PINK-FLOWERS**



**MODEL# BRBS25-TIGRESS**



**MODEL# BRBS25-TROPICAL**



**MODEL# BRBS25-WHITE-FLOWERS**



knitted  
textile

**SIZE RANGE:**  
ONE SIZE

**WOMEN'S & MEN'S > HATS**



**MODEL# VISS25-CHECKER**



**MODEL# VISS25-FRUITS**

> GROOVY ACCESSORIES



**MODEL# VISS25-GOLDEN-FLOWERS**



**MODEL# VISS25-PASTEL-FLOWERS**



**MODEL# VISS25-PINK-FLOWERS**



**MODEL# VISS25-TIGRESS**



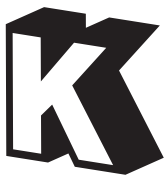
**MODEL# VISS25-TROPICAL**



**MODEL# VISS25-WHITE-FLOWERS**



**MODEL# VISS25-FLY**



# men's collection

pages#48-52 →

**kondor.com.pl**  
lifestyle footwear catalogue

**SPRING / SUMMER / 2025**

KONDOR Sp. z o.o. / 91a Św. Teresy Street  
91-341 Łódź / POLAND  
tel. (+48) 42 27 21 000 / inquiry@kondor.com.pl

featuring footwear branded by:





**MEN'S > FLIP FLOPS**



**MODEL#** SRIS25-DOGS

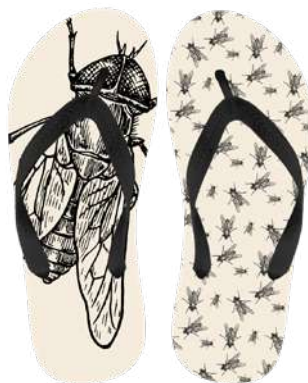


pvc



eva

**SIZE RANGE:** 41-46



**MODEL#** SRIS25-FLY

> PVC STRAP  
> EVA SOLE  
> HIGH QUALITY  
TRANSFER PRINT



**MODEL#** SRIS25-GORILLA



**MODEL#** SRIS25-SURF

**MEN'S > FLIP FLOPS**



**MODEL# JAP25-FLY**



**MODEL# JAP25-GORILLA**



**MODEL# JAP25-SURF**

- > BEACH READY
- > NICE & TRENDY DESIGNS
- > POOLSIDE PERFECT



**MODEL# JAP25-DOGS**



pvc



pe

**SIZE RANGE: 41-46**

**MEN'S** > POOL SLIPPERS



**MODEL#** KLAS25-DOGS



rubber



eva

**SIZE RANGE:** 41-46



**MODEL#** KLAS25-FLY



**MODEL#** KLAS25-GORILLA

> COOL 3D UPPER EFFECT  
> MODERN & CASUAL LOOK



**MODEL#** KLAS25-SURF

**MEN'S > SLIPPERS**



**MODEL#** DDS25-FLY



**MODEL#** DDS25-GORILLA



**MODEL#** DDS25-SURF

- > COMFY FIT
- > SOFT AND COZY
- > CLASSIC LOOK



**MODEL#** DDS25-DOGS



textille



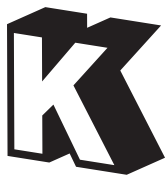
tpr



textille

**SIZE RANGE:** 41-46





women's & men's & kids'  
solid colours  
collection

pages#54-80 →

**kondor.com.pl**  
lifestyle footwear catalogue

**SPRING / SUMMER / 2025**

KONDOR Sp. z o.o. / 91a Św. Teresy Street  
91-341 Łódź / POLAND  
tel. (+48) 42 27 21 000 / inquiry@kondor.com.pl

featuring footwear branded by:

**HSL**  
HIGH STREET LONDON



**KIDS' > SANDALS**



**MODEL#** J-3K2302008\_CORAL



**MODEL#** J-3K2302008\_MINT



**MODEL#** J-3K2302008\_NAVY



**MODEL#** J-3K2302008\_PINK



**MODEL#** J-3K2302008\_VIOLET



**MODEL#** J-3K2302008\_YELLOW



**MODEL#** J-3K2302008\_GREEN



**MODEL#** J-3K2302008\_GREY



eva

eva

**SIZE RANGE:** 24-29; 30-35

**KIDS' > SPORT SHOES**



**MODEL#** 4185013\_CORAL



**MODEL#** 4185013\_MINT



**MODEL#** 4185013\_PINK



**MODEL#** 4185013\_VIOLET



pu+flyknit



tpr



mesh

**SIZE RANGE:** 28-36



**MODEL#** 4185013\_NAVY



**MODEL#** 4185013\_GREY

**WOMEN'S > SLIPPERS**



**MODEL#** GX220549\_BEIGE



**MODEL#** GX220549\_MINT



**MODEL#** GX220549\_NAVY



**MODEL#** GX220549\_PINK



**MODEL#** GX220549\_YELLOW



eva



eva



eva

**SIZE RANGE:** 36-40



**WOMEN'S** > SLIPPERS



**MODEL#** RCHKP07\_BEIGE



**MODEL#** RCHKP07\_BLACK



**MODEL#** RCHKP07\_WHITE



**MODEL#** 5Q2401014\_BEIGE



**MODEL#** 5Q2401014\_BLACK



**MODEL#** 5Q2401014\_PINK



eva



eva



eva

**SIZE RANGE:** 36-40

**WOMEN'S > SLIPPERS**



**MODEL#** LC0326-1\_BEIGE



**MODEL#** LC0326-1\_NAVY



**MODEL#** LC0326-1\_PINK



**MODEL#** LC0326-1\_MINT



**MODEL#** LC0326-2\_BEIGE



**MODEL#** LC0326-2\_NAVY



**MODEL#** LC0326-2\_PINK



**MODEL#** LC0326-2\_MINT



eva



eva



eva

**SIZE RANGE:** 36-41

**WOMEN'S** > SLIPPERS



**MODEL#** FFG2-02\_CORAL



**MODEL#** FFG2-02\_NAVY



**MODEL#** FFG2-02\_PINK



**MODEL#** FFG2-02\_MINT



**MODEL#** FFG2-02\_YELLOW



eva



eva



eva

**SIZE RANGE:** 36-40

**WOMEN'S > SLIPPERS**



**MODEL# FJT-02\_CORAL**



eva



eva



eva



**SIZE RANGE: 36-41**



**MODEL# FJT-02\_MINT**



**MODEL# FJT-02\_NAVY**



**MODEL# FJT-02\_PINK**



**MODEL# FJT-02\_YELLOW**



**WOMEN'S > SLIPPERS**



**MODEL#** FJT-01\_CORAL



eva



eva



eva



**SIZE RANGE:** 36-41



**MODEL#** FJT-01\_MINT



**MODEL#** FJT-01\_NAVY



**MODEL#** FJT-01\_PINK



**MODEL#** FJT-01\_YELLOW

**WOMEN'S** > SLIPPERS



**MODEL#** FJT-03\_CORAL



eva

eva

eva

**SIZE RANGE:** 36-41



**MODEL#** FJT-03\_MINT



**MODEL#** FJT-03\_NAVY



**MODEL#** FJT-03\_PINK



**MODEL#** FJT-03\_YELLOW

**WOMEN'S > SLIPPERS**



**MODEL#** FJT-04\_CORAL



**SIZE RANGE:** 36-41



**MODEL#** FJT-04\_MINT



**MODEL#** FJT-04\_NAVY



**MODEL#** FJT-04\_PINK



**MODEL#** FJT-04\_YELLOW



**MODEL#** FJT-04\_VIOLET



**MODEL#** FJT-04\_BLUE

**WOMEN'S & MEN'S > SLIPPERS**



**MODEL#** PY2024302\_CORAL



**MODEL#** PY2024302\_MINT



**MODEL#** PY2024302\_DK.BLUE



**SIZE RANGE:** 36-40; 40-46



**MODEL#** PY2024302\_PINK



**MODEL#** PY2024302\_YELLOW



**MODEL#** PY2024302\_KHAKI



**MODEL#** PY2024302\_GREY



**MODEL#** PY2024302\_BLACK



**MODEL#** PY2024302\_NAVY



**WOMEN'S > SLIPPERS**



**MODEL#** PY2024301\_PINK



eva



eva



eva

**SIZE RANGE:** 36-41



**MODEL#** PY2024301\_MINT



**MODEL#** PY2024301\_BLUE



**MODEL#** PY2024301\_CORAL



**MODEL#** PY2024301\_YELLOW

**WOMEN'S > SLIPPERS**



**MODEL#** FG25-01\_CORAL



eva



eva

**SIZE RANGE:** 36-41



**MODEL#** FG25-01\_MINT



**MODEL#** FJT-01\_NAVY



**MODEL#** FG25-01\_PINK



**MODEL#** FJT-01\_YELLOW

**WOMEN'S** > SLIPPERS WITH 3D LETTERS



**MODEL#** KLQS25-01\_PURPLE



**MODEL#** KLQS25-04\_FUSHIA



**MODEL#** KLQS25-02\_PINK+MINT



**MODEL#** KLQS25-03\_BLUE

> GROOVY  
TRANSPARENT  
UPPER



pvc



eva

**SIZE RANGE:** 36-41

**WOMEN'S & MEN'S** > SLIPPERS WITH 3D LETTERS



**MODEL#** KLX25-03-GVIBES\_PINK+BLUE



rubber

eva

**SIZE RANGE:** 36-41; 40-45



**MODEL#** KLX25-05-TOO-HOT\_LT.BLUE+PINK

- > LIGHTWEIGHT  
EVA MATERIAL
- > 3D RUBBER  
UPPER EMBLEM



**MODEL#** KLX25-06-CHILL-OUT\_NAVY



**MODEL#** KLX25-11-ROCK-HARD\_BLACK



**WOMEN'S & MEN'S** > SLIPPERS WITH 3D PRINT

> EVA MATERIAL  
> CONVEX PRINT  
> FRESH LOOK



**MODEL#** KLZ25-GOOSE\_PINK



**MODEL#** KLZ25-LAMA\_YELLOW



**MODEL#** KLZ25-LEMON\_NAVY



**MODEL#** KLZ25-FISH\_BROWN



tpr



eva

**SIZE RANGE:** 36-41; 40-45

**WOMEN'S > SLIPPERS**

> SOFT  
MICROFIBRE  
LINING



**MODEL# RHS25\_PINK**



pu



pvc



microfibre

**SIZE RANGE:** 36-41



**MODEL# RHS25\_MINT**



**MODEL# RHS25\_BLUE**



**MODEL# RHS25\_CORAL**



**MODEL# RHS25\_YELLOW**



**MODEL# RHS25\_WHITE**



**MODEL# RHS25\_BLACK**

**WOMEN'S** > SLIPPERS



**MODEL#** KRDS25\_CORAL



textile  
pvc



eva

**SIZE RANGE:** 36-41



**MODEL#** KRDS25\_MINT



**MODEL#** KRDS25\_NAVY



**MODEL#** KRDS25\_PINK



**MODEL#** KRDS25\_YELLOW

**WOMEN'S > SLIPPERS**



**MODEL#** LC035872\_PINK



**MODEL#** LC035872\_DK.BLUE



**MODEL#** LC035872\_MINT



**MODEL#** LC035872\_YELLOW



**MODEL#** LC048684\_PINK



**MODEL#** LC048684\_DK.BLUE



**MODEL#** LC048684\_MINT



**MODEL#** LC048684\_YELLOW



**MODEL#** LC049200\_PINK



**MODEL#** LC049200\_DK.BLUE



**MODEL#** LC049200\_MINT



**MODEL#** LC049200\_YELLOW



pu pvc pvc

**SIZE RANGE:** 36-41



pvc pvc

**SIZE RANGE:** 36-41

**WOMEN'S & MEN'S > SLIPPERS**



**MODEL#** GX2408590\_CORAL



**MODEL#** GX2408590\_MINT



**MODEL#** GX2408590\_DK.BLUE



**MODEL#** GX2408590\_PINK



**MODEL#** GX2408590\_YELLOW



**MODEL#** GX2408590\_BLACK



**MODEL#** GX2408590\_GREY



**MODEL#** GX2408590\_NAVY



**MODEL#** GX2408590\_GREEN



eva



eva



eva

**SIZE RANGE:** 36-40; 40-46



**WOMEN'S > SANDALS**



**MODEL#** SNDS25\_BEIGE



**MODEL#** SNDS25\_CORAL



**MODEL#** SNDS25\_MINT



**MODEL#** SNDS25\_NAVY



**MODEL#** SNDS25\_PINK



textile



pu



textile

**SIZE RANGE:** 36-41

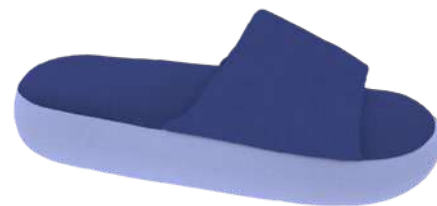
**WOMEN'S > SLIPPERS**



**MODEL#** DAS25\_CORAL



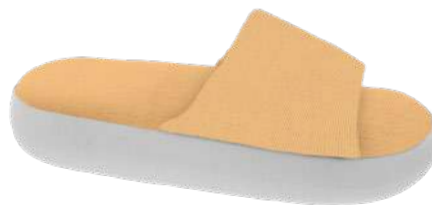
**MODEL#** DAS25\_MINT



**MODEL#** DAS25\_NAVY



**MODEL#** DAS25\_PINK



**MODEL#** DAS25\_YELLOW

> NICE FLUFFY  
TEXTILE FINISH  
> GROOVY MASSIVE,  
ROUNDED OUTSOLE



textile



eva



textile

**SIZE RANGE:** 36-41

## WOMEN'S > TRAINERS



**MODEL#** TRM01S25\_BEIGE



**MODEL#** TRM01S25\_BEIGE



**MODEL#** TRM01S25\_CORAL



**MODEL#** TRM01S25\_MINT



**MODEL#** TRM01S25\_NAVY



**MODEL#** TRM01S25\_PINK



**MODEL#** TRM01S25\_YELLOW



canvas



pvc



textile

**SIZE RANGE:** 36-41

## WOMEN'S > TRAINERS



**MODEL#** TRM02S25\_BEIGE



**MODEL#** TRM02S25\_BLACK



**MODEL#** TRM02S25\_CORAL



**MODEL#** TRM02S25\_MINT



**MODEL#** TRM02S25\_NAVY



**MODEL#** TRM02S25\_PINK



**MODEL#** TRM02S25\_YELLOW



**SIZE RANGE:** 36-41

**WOMEN'S > TRAINERS**



**MODEL#** FLS25L\_BLACK



**MODEL#** FLS25L\_CORAL



**MODEL#** FLS25L\_MINT



**MODEL#** FLS25L\_NAVY



**MODEL#** FLS25L\_PINK



**MODEL#** FLS25L\_WHITE



**MODEL#** FLS25L\_YELLOW



textile



pvc



textile

**SIZE RANGE:** 37-41



## WOMEN'S > TRAINERS



**MODEL#** FLS25\_BLACK



**MODEL#** FLS25\_CORAL



**MODEL#** FLS25\_MINT



**MODEL#** FLS25\_NAVY



**MODEL#** FLS25\_PINK



canvas



pvc



textile



**MODEL#** FLS25\_WHITE



**MODEL#** FLS25\_YELLOW

**SIZE RANGE:** 36-41

## WOMEN'S > TRAINERS



**MODEL#** CCL16-1\_BLACK



**MODEL#** CCL16-1\_MINT



**MODEL#** CCL16-1\_NAVY



**MODEL#** CCL16-1\_PINK



**MODEL#** CCL16-1\_OLIVE



**MODEL#** CCL16-1\_YELLOW



pu



rubber



canvas



canvas



rubber



canvas

**SIZE RANGE:** 36-40

**SIZE RANGE:** 36-40

**WOMEN'S** > SPORT SHOES

> KNITTED UPPER  
> AIRY DESIGN  
> PERFECT FOR SUMMER



**MODEL#** HTS25\_BEIGE



**MODEL#** HTS25\_BLUE



**MODEL#** HTS25\_CORAL



**MODEL#** HTS25\_MINT



**MODEL#** HTS25\_PINK



**MODEL#** HTS25\_YELLOW



textile



pvc



textile

**SIZE RANGE:** 36-41

**WOMEN'S > ESPADRILES**



**MODEL#** ESPS25\_BEIGE



**MODEL#** ESPS25\_BLACK



**MODEL#** ESPS25\_MINT



**MODEL#** ESPS25\_PINK



**MODEL#** ESPS25\_WHITE



**MODEL#** ESPS25\_YELLOW

> ELASTIC BAND  
FOR EASY SLIP-ON  
> WICKER SOLE



canvas



rubber



cotton

**SIZE RANGE:** 36-40

**WOMEN'S > ESPADRILES**



**MODEL#** ELS25\_CORAL



**MODEL#** ELS25\_MINT



**MODEL#** ELS25\_NAVY



**MODEL#** ELS25\_PINK



flyknit



pvc



pigskin

**SIZE RANGE:** 36-41



**MODEL#** ELS25\_YELLOW

> EASY SLIP-ON  
> SUMMER PERFECT  
> COMFORTABLE FIT



## WOMEN'S > ESPADRILES



MODEL# TERS25\_BEIGE



MODEL# TERS25\_CORAL



MODEL# TERS25\_MINT



MODEL# TERS25\_NAVY



MODEL# TERS25\_PINK



MODEL# TERS25\_YELLOW

> NICE AIRY &  
BREATHABLE  
CONSTRUCTION  
> EYE-CATCHING  
SUBTLE DESIGN



flyknit



pvc



pigskin

SIZE RANGE: 36-41

## WOMEN'S > KNITTED TRAINERS



textile



pvc



textile

- > KNITTED UPPER
- > BREATHABLE DESIGN
- > LIGHTWEIGHT BUILD



**MODEL#** WSS25\_MINT



**MODEL#** WSS25\_YELLOW



**MODEL#** 2KTDS25\_BEIGE



**MODEL#** 2KTDS25\_BLACK



**MODEL#** KTDS25\_NAVY



**MODEL#** KTDS25\_PINK



**MODEL#** KTDS25\_WHITE

**WOMEN'S** > SPORT SHOES



**MODEL#** 4185023\_CORAL



**MODEL#** 4185023\_MINT



**MODEL#** 4185023\_NAVY



**MODEL#** 4185023\_PINK



mesh+pu



tpr+eva



mesh



**MODEL#** 4185023\_BLACK

**SIZE RANGE:** 36-41

**MEN'S** > CASUALS



**MODEL#** DL-JN-013\_BEIGE



**MODEL#** DL-JN-013\_BLACK



**MODEL#** DL-JN-013\_GREY



**MODEL#** DL-JN-013\_GREEN



textile



rubber



textile

**SIZE RANGE:** 41-46



**MODEL#** DL-JN-013\_NAVY

## WOMEN'S > RAINBOOTS



**MODEL#** PBB-755  
SHINY NAVY

**MODEL#** PBB-755  
MATT NAVY



**MODEL#** PBB-755  
SHINY YELLOW

**MODEL#** PBB-755  
MATT YELLOW



**MODEL#** PBB-755  
SHINY PINK

**MODEL#** PBB-755  
MATT PINK



**MODEL#** PBB-755  
SHINY MINT

**MODEL#** PBB-755  
MATT MINT



pvc



pvc



textile

**MODEL#** PBB-757  
MATT BLACK



**MODEL#** PBB-759  
SHINY BLACK

> EVERGREEN  
CHELSEA BOOT  
CUT  
> MATT OR SHINY  
FINISH OPTION

**SIZE RANGE:** 36-41



**NOTES**

Lined area for notes, consisting of multiple horizontal dotted lines within a rounded rectangular border.

**NOTES**

Lined area for notes, consisting of multiple horizontal lines within a dotted border.





# kondor.com.pl

lifestyle footwear catalogue

**SPRING / SUMMER / 2025**

KONDOR Sp. z o.o. / 91a Św. Teresy Street  
91-341 Łódź / POLAND  
tel. (+48) 42 27 21 000 / [inquiry@kondor.com.pl](mailto:inquiry@kondor.com.pl)

